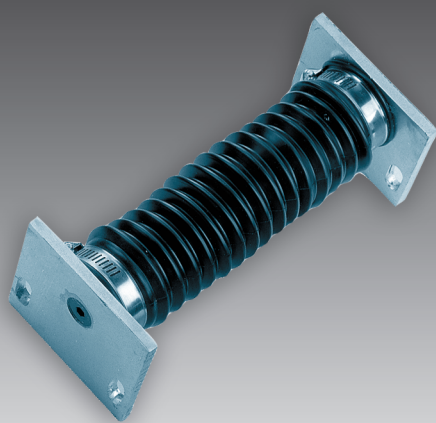




sartorius

PR 6152

## Horizontal Constrainers



- Withstand horizontal forces up to 200 kN
- Frictionless
- Easy to build-in
- Dust proof

### Profile

When a load is weighed by load cells, only the vertical forces must be transferred to the load cell if weighing accuracy is to be maintained. Sartorius Horizontal Constrainers eliminate the detrimental effect of horizontal crossforces which cause weighing inaccuracies. All vertical forces are transferred to the weighing system load cells without incurring frictional losses.

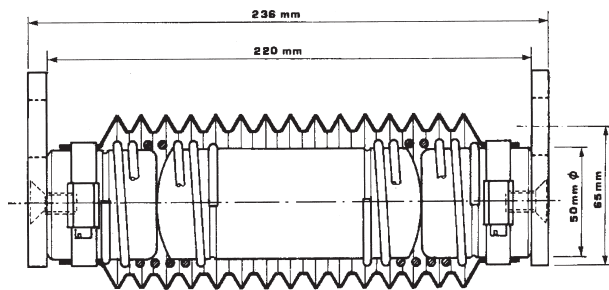
### Description

The horizontal constrainer comprises two solid steel cylinders interspaced by a central cylinder and interconnected by two helical springs. The ends of the central cylinder are slightly convex and lubricated to ensure frictionless contact with the end cylinders. The whole arrangement is enclosed in a corrugated rubber gaiter held in position by two universal clips. This affords adequate protection against ingress of moisture and foreign matter.

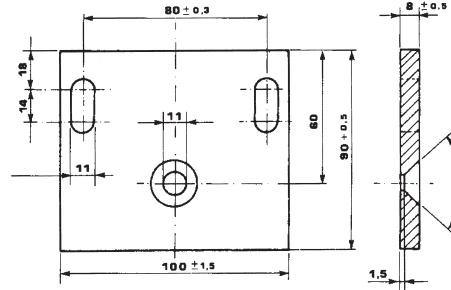
It is necessary to fit the constrainers in pairs, as they can only absorb compressive forces.

Thus a minimum of four constrainers is required to counteract lateral and longitudinal horizontal forces. Mounting is facilitated either by two M10 screws used in conjunction with axially drilled holes at each end of the constrainer, or by using the two mounting plates. Horizontal constrainer sets can be fitted in various configurations to achieve maximum stability. Two constrainers are supplied under the part number PR 6152/02.

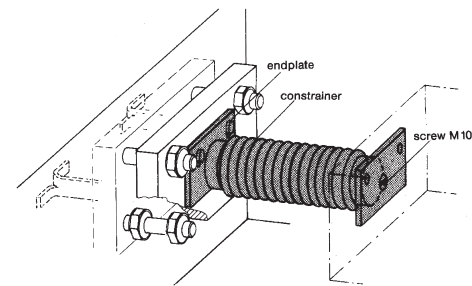
## Technical Data



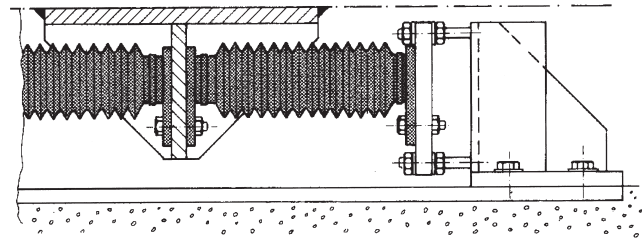
Dimensions, Horizontal Constrainer incl. endplates



Dimensions, endplate in mm



Mounting example



Mounting example

### Weight / Shipping weight

9 kg / 10 kg per set of two

### Dimensions

See diagram

End plates are included with the constrainers

### Package Dimensions

250 x 230 x 130

### Protection

Dust and dirt protected

### Ambient temperature range

-40... +90° C

### Max. horizontal forces

200 kN

### Destructive forces

> 500 kN

### Max. vertical movement

± 7.5 mm

### Mounting / Adjustment

Mounting should be effected parallel to the direction in which forces are to be constrained. After installation, the constrainers should be adjusted so that an axial movement of 0.3 to 0.5 mm is possible. Thermal expansion of the weighing construction e.g. tank, hopper, platform must be taken into account so that it has no influence on the specified tolerance.

### Order information

#### Type

PR 6152/02

#### Order number

9405 361 52021

Forhandling i Danmark:

GLOBAL Weighing A/S

Tlf.: 4776 0430

[www.global-weighing.dk](http://www.global-weighing.dk)

Sartorius Hamburg GmbH  
Meiendorfer Straße 205  
22145 Hamburg, Germany  
Tel. +49.40.67960.303  
Fax +49.40.67960.383  
[www.sartorius.com](http://www.sartorius.com)